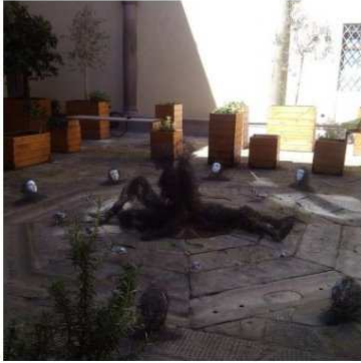


Artist » Disconnected



## Disconnected

Installation  
category

2015  
year

15x12 cm  
dimensions

Gerardo  
Rosato

Turin, Italy

Two figures, 2 meters high, made of wire, are seated in the center of the stage, surrounded by 10 half-busts with white masks (the disconnected), the ones who live hiding, staring with envy at normal people. Two men of sand, closed in 8 wooden boxes hanging from the ceiling. Every box will represent a different situation inside. The sand is mixed with natural resin and iron, which come from the foundry where I work.